



Greenway, Totteridge, N20 8EJ
£3,500 Per Calendar Month

Council Tax Band G

REAL ESTATES
Est. 1981

Estate Agents · Residential Sales · Investments · Lettings

***AVAILABLE 21ST APRIL* 3 BEDROOM DETACHED** house in this sought after turning in the heart of Totteridge, conveniently situated close to Whetstone High Road's multiple shops, restaurants and transport facilities including Totteridge & Whetstone Northern Line tube station.

*** 2 RECEPTION ROOMS * FITTED KITCHEN * 3 BEDROOMS * MODERN BATHROOM/WC * FITTED CARPETS * GARAGE * OFF STREET PARKING * GARDEN * UNFURNISHED ***

Greenway, London, N20

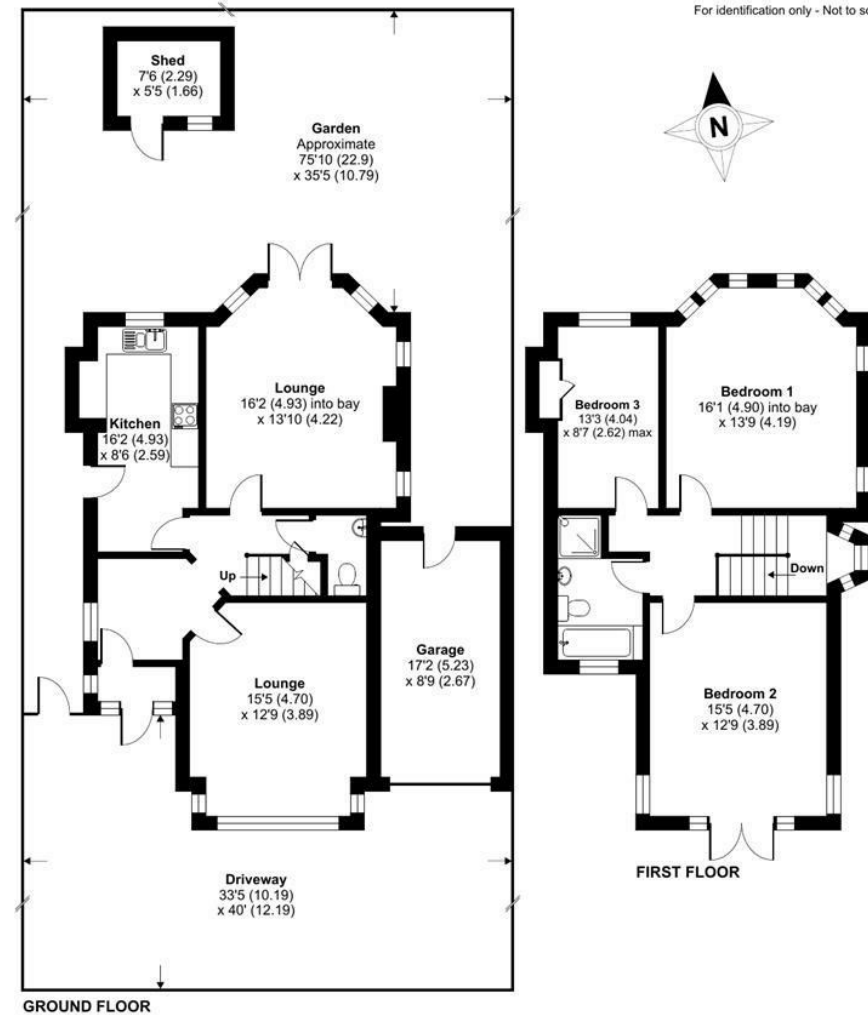
Approximate Area = 1370 sq ft / 127.3 sq m

Garage = 148 sq ft / 13.7 sq m

Shed = 41 sq ft / 3.8 sq m

Total = 1559 sq ft / 144.8 sq m

For identification only - Not to scale



Energy Efficiency Rating		Current	Potential
Very energy efficient - lower running costs			
102 (min)	A		
(81-91)	B		
(69-80)	C		
(55-68)	D		
(39-54)	E		
(21-38)	F		
(1-20)	G		
Not energy efficient - higher running costs			
England & Wales		EU Directive 2002/91/EC	76



Floor plan produced in accordance with RICS Property Measurement Standards incorporating International Property Measurement Standards (IPMS2 Residential). © nichecom 2023. Produced for Real Estates. REF: 1007966